

# Welcome...

...to the 16<sup>th</sup> year of the Eastbourne Beer Festival!

This year we will be celebrating a whole host of award-winning ales and quirky brews, all in the sparkling new facilities of the Welcome Building at Devonshire Park.

As well as enjoying a glimpse of this superb new venue which has already hosted a range of international events, we also have an excellent entertainment line-up and a superb range of tantalising tipples, from cider, perry and juices to wines, gin and bottled beers from around the world, plus of course more than 90 real ales hand-picked especially by the team at CAMRA.

Tremendous thanks go to the South East Sussex branch of CAMRA for their valued support in the organisation of this event and also in providing knowledgeable staff at the bars, many of whom will be happy to chat to you, to find the best beer to tempt your tastebuds.

Enjoy your visit!

**Councillor Steve Wallis,  
Mayor of Eastbourne**

Welcome to the 16<sup>th</sup> Eastbourne Beer Festival, which we are delighted is back. South East Sussex Branch of CAMRA is again delighted to be invited by Eastbourne Borough Council to select, prepare and serve more than 90 different real ales. This programme is designed to help you to select beers to your taste; CAMRA members behind the bars offer help to anybody needing more information on breweries, beer styles and flavours. We are pleased to promote local Sussex beers as well as a wide selection from around the UK.

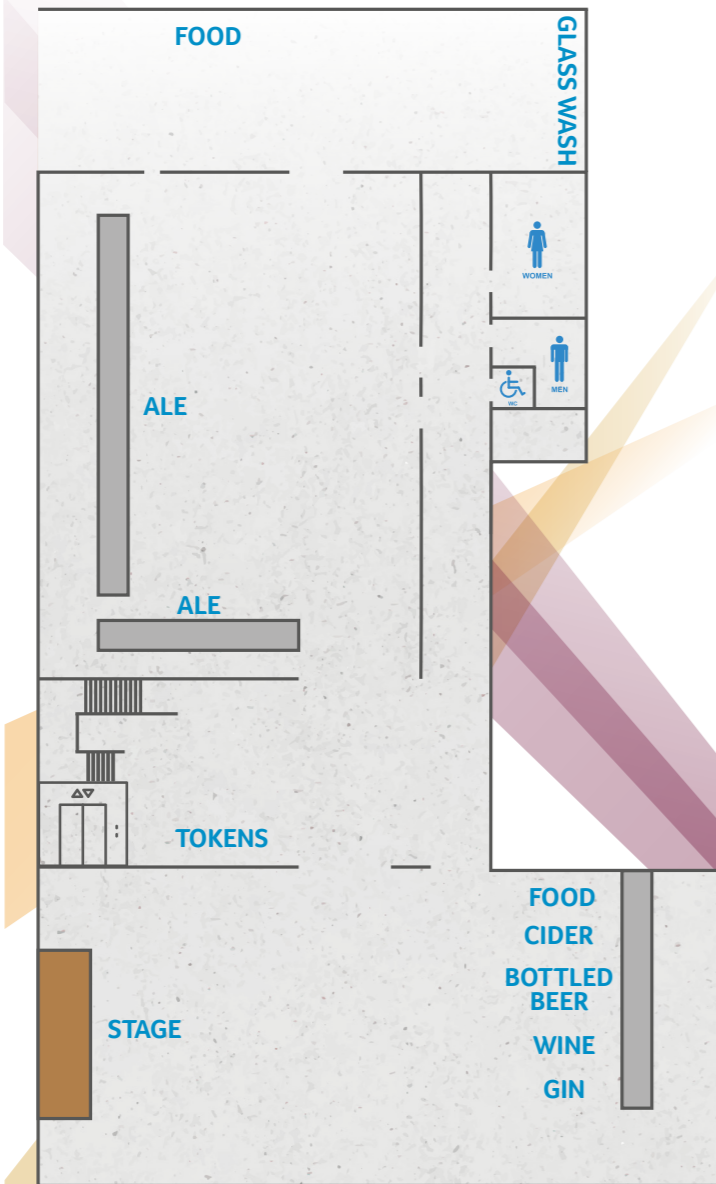
If you have enjoyed your beer and/or cider here, I would urge you to support your local pubs; this will help and encourage them to provide increased choice. To find out more about CAMRA, its aims and activities, please visit the stand between the two beer bars.

**Peter Adams  
Chair, CAMRA South East Sussex Branch**

**EASTBOURNE**  
in association with



# Site Plan



## The Bars

Behind the bar, CAMRA members will be happy to help you find the perfect tipple to suit your tastebuds.

Drinks can only be purchased using tokens available from the Cashier's Desks. No cash will be accepted at the bars. Last orders are 15 minutes prior to the session closing time, with 10 minutes 'drinking up time'.

## Live Music

**Thursday**  
Joel White 7pm • Rufus Stone 9.30pm

**Friday**  
Glam Rox 6.30pm • Unihorn 8.45pm

**Saturday (day)**  
ToonTones Jazz Quartet 11.45am • Stray Dogs 2pm

**Saturday (evening)**  
Bedraggled 6.30pm • Fat Freddie & The Queens 8.45pm

## Pub Games

Challenge your friends with some traditional pub games and childhood favourites! Choose from..

- Dominoes • Cards • Cribbage • Draughts
- Chess • Connect 4 • Scrabble • Backgammon
- Ludo • Brain Teasers • Jenga

Special thanks to our partners CAMRA and our sponsors...



## Why not join CAMRA today?

Membership starts from £26.50 per year, £18 for under 26 and includes:

- Award-winning BEER magazine and What's Brewing newspaper
- Free or reduced entry to over 180 beer festivals
- £30 CAMRA real ale vouchers
- The Real Ale Discount Scheme, a discount on pints at all participating pubs
- Opportunity to campaign to save pubs under threat from closure

To join or for further information visit the CAMRA membership stand by the real ale bars.  
[www.camra.org.uk](http://www.camra.org.uk)



## Beer of the festival!

Vote for your favourites in the CAMRA Sussex Microbrew of the Festival, your favourite national brew in Harveys' Star of Eastbourne Beer of the Festival, and finally your overall top tipple with the Beer of the Festival.

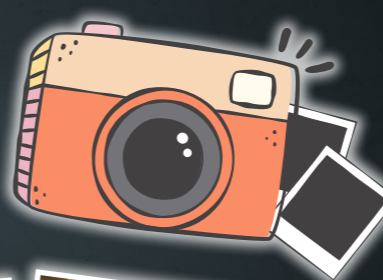


Vote by 8pm on Saturday (pick up a voting slip at the Cashier's Desk or Glass Collection Point). Winners announced at 10pm.

## Say Cheese

The photobooth\* is back! Have fun with your beer fest buddies and take home a photo souvenir of your time at the festival. Barrels of laughs guaranteed!

\*Charges apply.



## Perries

<b>Broadoak</b> Premium Perry (Sweet) So smooth; so moreish; so have another!	7.5%	<b>Gwatkins</b> Blakeney Red (Med) Buxom, rounded, fruity...great at the table or on its own.	7%
<b>Double Vision</b> Elderflower (Med) English summer in a glass!	5.3%	<b>Gwyn Y Ddraig</b> Two Trees (Med) Smooth, easy drinking and CAMRA Gold winner 2015!	4.5%

## Ciders

<b>Ascension</b> Can I Play With Mangoes (Med/Sweet) Double Indian mango cider.	4%	<b>Rosie's</b> Black Bart (Sweet) Rum-casked, irresistible...perfect for pirates!	6.4%
<b>Whispers in the Shadows</b> (Med) Wild cider, fresh apple juice and red plum.	4%	<b>Sandford Orchards</b> The General (Med/Dry) Powerful and oh-so easy to drink.	8.4%
<b>Battle Organic</b> Elstar (Med) All Sussex. All organic. Aged in French oak casks.	4.4%	<b>Seacider</b> Strawberry (Sweet) Made with pure strawberry juice, you can't go wrong!	4%
<b>Abbott's Gold</b> (Med/Sweet) All Sussex. All organic from a blend of apples.	5.6%	<b>Marmalade</b> (Sweet) Sweet, refreshing and bursting with flavour.	4%
<b>Dorset Nectar</b> Old Harry Rocks Vintage Cider (Dry) Organic, award-winning, vegan-friendly.	6%	<b>South Downs</b> Elderflower (Med) Hazy, floral; an early English summer's day in a glass.	4.5%
<b>Gwyn Y Ddraig</b> Black Dragon (Med/Dry) Very clean, easy-drinking, perennially popular prizewinner.	7.2%	<b>Rhubarb</b> (Med) Pleasing sharpness of rhubarb on a cushion of apple.	4.5%
<b>Harry's</b> Scrummage (Med) CAMRA Cider of the Year 2018. Superbly made, delicious!	6.2%	<b>Trenchmore</b> Silly Moo (Med) Naturally cloudy, unfiltered Sussex cider. Mix of East and West Country styles.	5%
<b>Hecks</b> Glastonbury Gold (Med) Oh-so easy to drink!	6.5%	<b>Ventons</b> Apple Vice (Med) Pressed through straw and keeved - as traditional as it gets!	6.5%
<b>Hunts</b> Conquest (Med) Very, very easy drinking.	4.9%	<b>West Croft</b> Janet's Jungle Juice (Med/Dry) CAMRA Cider of the Year 2015!	6%
<b>Merry Moon</b> Dark Cider the Moon (Med) Ribena for grown-ups, irresistible!	6%		
<b>Lemon Moon</b> (Dry) Really thirst quenching and deliciously fruity.	6%		
<b>Newton Court</b> Gasping Goose (Med) Crisp, clear, clean and golden. Very popular and organic.	5.8%		
<b>Nightingale</b> Discovery (Med) Beautifully fruity, blush cider.	6%		

## Sussex Beers

<b>1648</b> Bee Head Honey in colour and flavour, with a gentle biscuit edge.	4.6%	<b>The Engineer</b> <small>Cont.</small> Sussex Altbier A rich caramel biscuit malt body balanced with a moderate bitterness.	4.9%
<b>Gold Angel</b> Gold coloured, medium bodied with a light malt and citrus hop character.	5%	<b>FILO</b> Cardinal A classic black porter with chocolate malt and roasted barley.	4.6%
<b>360° Brewing</b> Session IPA Dry-hopped with Amarillo and Chinook for hints of grapefruit and tangerine.	4.3%	<b>Gold</b> Golden bitter with refreshing hints of elderflower.	4.8%
<b>West Coast Pale</b> Californian style pale ale, packed with the fruitiest and most vibrant U.S. hops.	5.2%	<b>Firebird</b> Festive 51 Traditional premium bitter with a rich malty flavour, well balanced.	4.8%
<b>Battle</b> Abbey Pale Tropical fruit aromas meet citrus flavours and biscuit malt.	5%	<b>Two Horses</b> Intensely hopped with modern bold varieties to give a big aroma with balancing bitterness.	3.8%
<b>Stigand</b> Oatmeal stout, a new beer first brewed in summer 2019.	4.9%	<b>Franklins</b> Eclipse A light and refreshing porter with hints of chocolate, caramel and coffee.	4%
<b>Alan the Red</b> A ruby beer, with dry spicy character, caramel malt body and fruity hop flavours.	4.6%	<b>Lawless</b> Juicy and fruity session New England pale.	3.8%
<b>Bedlam</b> Hoppy Golden Ale Good balance of American Summit and Cluster hops, gently added late in the boil.	4.2%	<b>Gun</b> Parabellum Milk Stout Balance of coffee, vanilla and chocolate notes and a full malt base.	4.1%
<b>Brighton Bier</b> South Coast Brewed with Equinot, Chinook and Columbus hops, in a South Coast style.	5%	<b>Project Babylon</b> APA Vibrant, refreshing and zesty on the nose with citrus notes.	4.6%
<b>Burning Sky</b> Aurora Pale Ale A satisfying blend of malts to provide a juicy backbone.	5.6%	<b>Scaramanga</b> Extra Pale A refreshing extra pale session ale with pale malts and zesty, floral hops.	3.9%
<b>Plateau</b> Pale gold in colour, with a crisp malt edge and sharp bitterness.	3.5%	<b>Harvey's</b> Armada Ale A premium bitter ale with vibrant hop tones.	4.5%
<b>Dark Star</b> Hophead A pale golden ale with a strong floral aroma and elderflower notes.	3.8%	<b>Bonfire Boy</b> A dark amber beer with a full malty palate, and superb smoky flavour.	5.8%
<b>The Engineer</b> Oktoberfest Traditional malt-focussed lager beer in the style of the Munich Beer Festival.	4.8%	<b>Star of Eastbourne</b> Full hop aroma, golden body and tight head, ends with a dry finish.	5.5%
<b>High Hurstwood</b>	4.8%	<b>Sussex Best Bitter</b> A blend of four different hops impart a distinctive character and moreish quality.	4%

Harvey's Cont.

**Sussex XX Mild Ale** 3%

A soft and slightly sweet dark mild with a dry, nutty aftertaste.

**Sussex XXXX Old Ale** 4.3%

Dark winter brew, malty, nutty and light smoke flavours.

**Heathen** 5.6%

A traditional strong English style bitter.

**West Coast IPA** 5.2%

An American style IPA, brewed with New World hop varieties.

**High Weald** 4%

A refreshing golden beer, combining British and American hop varieties.

**Off the Chart IPA** 5%

A powerfully hopped, American style session IPA, with plenty of hop flavours and a tropical fruit aroma.

**Kiln** 4.8%

A fruity IPA, balanced by a little bitterness, with a combination of Cascade, Centennial and Mosaic hops.

**Gossip** 3.9%

Crisp, refreshing, light-bodied beer, using spicy, herbal, lemony European hops, leaving a palate cleansing bitterness.

**Kissingate** 4.2%

A full fruit and flavoursome dark mild.

**Black Eyed Susan** 6.8%

South East Sussex CAMRA's Champion Sussex Beer of the Year 2018.

Kissingate Cont.

**Chocolate & Vanilla Oatmeal** 4.8%

A smooth, dark roasted malt with oatmeal flavours and subtle vanilla notes, with a mild bitter finish.

**Long Man Best Bitter** 4%

Well balanced, complex bittersweet malty taste and fragrant hops.

**Indian Summer** 4.8%

Lightly-kilned speciality malts provide a subtle sweetness to balance the citrus and pine of modern US hops.

**Marzen** 5.3%

A malty, clean, Bavarian lager, brewed with toasted malts and subtle spicy and floral German hops.

**Rother Valley Alliance** 4.2%

A pale golden ale with a hoppy citrus flavour and aroma.

**Level Best** 4%

A classic beer in a ripe harvest golden colour, brewed with Phoenix hops, leaving a slightly citrus aftertaste.

**Ruby Wheat Beer** 4.4%

A well balanced wheat beer brewed with First Gold and Cascade hops, which give this a unique chocolate-orange taste.

**Three Legs English IPA** 5%

Caramel and orange-like maltiness.

**Pale #2** 3.7%

A clean and crisp pale ale with fresh hop aromas.

## National Beers

**Adnams Ghost Ship** 4.5%

Pale ale, full of citrus and biscuit aromas, with a hoppy bite.

**Arran Blonde** 5%

Light toasted malts with a taste of citrus hops.

**Bexley Black Prince Rum Porter** 5%

A dark, rich ale with a roasted vanilla aroma and a sweet chocolate, coffee flavour.

**Bingham's Twyford Tipple** 3.7%

Easy drinking, tawny coloured bitter which has a malty flavour with a citrus hop finish.

**Vanilla Stout** 5%

Infused with vanilla pods, which complement the dark malts to create a smooth drinking, dark stout.

**Bristol Beer Factory Milk Stout** 4.5%

A creamy stout with chocolatey sweetness, balancing coffee with hints of dark fruits.

**Burton Bridge Thomas Sykes** 10%

Straw coloured ale, very warming and winery.

**Castle Rock Elsie Mo** 4.7%

A blonde single malt beer, light in colour and refreshing on the palate.

**Coach House Dick Turpin** 4.2%

A full toffee-like malt is the dominant flavour with a mellow hoppy aroma.

**Dancing Duck Ay Up** 3.9%

Subtle malt and floral notes are matched with citrus hop, rounded off with a slightly dry finish.

**Dorset Dorset Durdle Door** 5%

Full bodied, clean tasting, with moderately dry finish. Hints of traditional marmalade on the palate.

**Fyne Ales Hurricane Jack** 4.4%

Fruity with a healthy dose of biscuit malt for balance. Spicy finish.

**Jarl** 3.8%

A particularly strong citrus flavour dominates this light, golden beer.

**Goachers Gold Star** 5.1%

Pale ale made with floor-malted Maris Otter barley and hopped with East Kent aroma hops.

**Real Mild Ale** 3.4%

A full-flavoured malty ale with a background bitterness.

**Hawkshead Red** 4.2%

A rich, malt-forward Red Ale, brewed with Maris Otter malted barley and whole cone English hops.

**Windermere Pale** 3.5%

Fruity hop flavours from a medley of traditional and modern hops.

**Kent Black Gold** 4%

Rich and dark coloured, with many of the flavours and easy-drinking qualities of a golden ale.

**Mallinsons Ekuanot** 3.9%

A rich, blonde ale with hints of tropical fruit in the aroma and a bitterness that leans toward papaya and lime.

**Tipping Point** 4.5%

A burnished golden ale with aromas of sherbet orange and candied zest.

**Northern Alchemy Lemon & Vanilla Oatmeal Stout** 6%

An oatmeal stout conditioned with fresh lemon zest and vanilla pods.

**Old Dairy Blue Top** 4.8%

Bitterness, smoothly balanced with caramel flavours from the crystal malt and a hint of lemon from Styrian Golding hops.

**Orkney Dark Island** 4.6%

Ripe and fruity with slightly vinous esters.

**The Red MacGregor** 4%

Generous hoppy nose and a flowery hop flavour, with a smooth malty finish.

**Phoenix Wobbly Bob** 6%

Aroma of citrus, malt, hops, toffee and light tropical fruit. Medium sweetness and moderate bitterness.

**Pictish Brewers Gold** 3.8%

Malty undertones and a powerful spicy hop aroma.

**Pig and Porter Red Spider Rye** 4.8%

A ruby red ale made with rye malt and Centennial and Columbus hops.

**Purple Moose Dark Side of the Moose** 4.6%

Rich malty flavour balanced with fruity bitterness.

**Rebellion Roasted Nuts** 4.6%

Full flavoured, fruity ale.

**Redemption Hopspur** 4.5%

Citrus fruit aromas, biscuity malt flavours, slight sticky sweetness and grapefruit piney hop flavours.

**Reunion Opening Gambit** 3.8%

A session bitter with malt and fruity flavours.

**Rudgate Battleaxe** 4.2%

Sweet malty taste with a caramel nuttiness.

**Saltaire Amarillo** 4.5%

Hopped with American Amarillo hops, with intense citrus fruit flavours.

**Blonde** 4%

A straw coloured light ale with soft malt flavours, delicately hopped with Czech and German hop varieties.

**Thornbridge Crackendale** 5.2%

Tropical fruit aroma, gives way to guava and ripe citrus, with a bitter and sweet balance.

**Pollards** 5%

A rich coffee milk stout with an aroma to match.

**Manchester Argyle** 4.4%

Fruity with a healthy dose of biscuit malt for balance. Spicy finish.

**Staffordshire Iceberg** 4.1%

A combination of Maris Otter pale malt and fine wheat malt, give this refreshing beer real zest.

**Plum Porter** 4.9%

Dark strong and well rounded.

**Triple FFF Pressed Rat and Warthog** 3.8%

Ruby coloured, coffee, chocolate aroma with hints of dried fruits and sour cherry, leads to a soft yet full roast flavour.

**Truman Runner** 4%

An easy drinking chestnut brown ale, brewed with a complex selection of five malts.

**Swift** 3.9%

Juicy, gently hoppy and mellow, brewed with both lager and ale hops.

**Vale Black Swan Mild** 3.9%

Dark and smooth, with a full roast flavour that belies its strength.

**West Berkshire Maggs' Magnificent Mild** 3.5%

A rich, dark mild with biscuit malt flavours, a light earth hop aroma and a velvety smooth finish.

**Mr Swift** 3.8%

A tropical, floral sensation with subtle caramel maltiness.

**Westerham British Bulldog** 4.1%

A mixed taste of toffee, bread and herbal hops.

**White Horse Village Idiot** 4.1%

Light straw coloured beer with a lasting fruity aftertaste.

**EASTBOURNE BEER & CIDER BY THE SEA**  
**SPRING BEER FESTIVAL**  
**22nd - 24th MAY 2020**  
[EastbourneBeerFestival.co.uk](http://EastbourneBeerFestival.co.uk)

**SUSSEX GIN & FIZZ FESTIVAL**  
**The Sussex Gin & Fizz Festival returns on Saturday 13th June 2020**  
 • Live music • Free samples • Local artisan food stalls • Bars  
 • Talks by industry experts • Buy direct from the producers  
**Tickets on sale Spring 2020**  
[www.sussexginandfizzfestival.com](http://www.sussexginandfizzfestival.com)  
 @sussexginandfizzfestival @sussexginfizz

## Win Tickets to Beer & Cider by the Sea

Get social! Share your Beer Fest photos and tag Eastbourne Beer Festival for a chance to win four free tickets to our Spring beer festival from 22 - 24 May 2020!

- [@EB\\_BeerFestival](#)
- [EastbourneBeerFestivals](#)
- [@EB\\_BeerFestival](#)



## Eastbourne Events 2020

- Magnificent Motors • 2-3 May
- Beer & Cider by the Sea • 22-24 May
- Nature Valley International • 19-27 June
- Beach Life Music Festival • 11-12 July
- Airbourne: International Airshow • 13-16 August
- Beer Festival • 8-10 October
- Beachy Head Marathon • 24 October

Find more events at [VisitEastbourne.com](http://VisitEastbourne.com)

## Join the Eastbourne Beer Festival on Tour!



Sample more real ale and cider and discover the perfect pint at a choice of 30 pubs in and around Eastbourne.

Pick up a passport today from the Cashier's Desk and collect stamps along the way to claim a free t-shirt (20 stamps) and for the chance to win one of two exclusive Harvey's Brewery tours (25 stamps). Runs until 1 November. [www.EastbourneBeerFestival.co.uk](http://www.EastbourneBeerFestival.co.uk)

# EASTBOURNE BEER FESTIVAL



# TASTING NOTES 2019

**Colour Key**  
 Use this colour coding to assist you in choosing your perfect ale.

- Golden Ales
- Pale Ales & Light Bitters
- Amber or Darker Bitters
- Dark Milds, Olds & Barley Wines
- Porters & Stouts
- Speciality or Unusual



Whilst every care has been taken in compiling this programme, Eastbourne Borough Council cannot accept responsibility for changes and cancellations. Please drink responsibly.